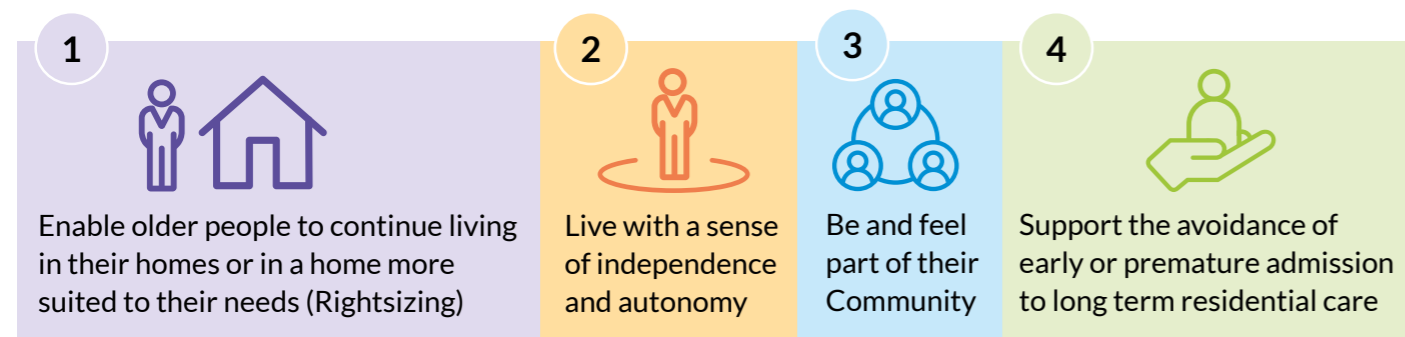


Healthy Age Friendly Homes

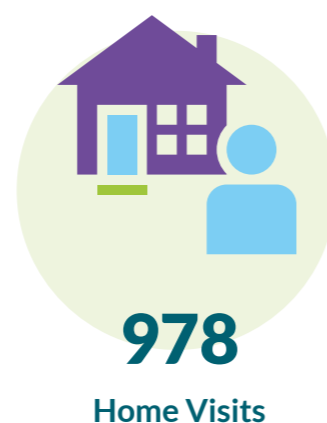
Phase 1 Early Outcomes

Key Objectives



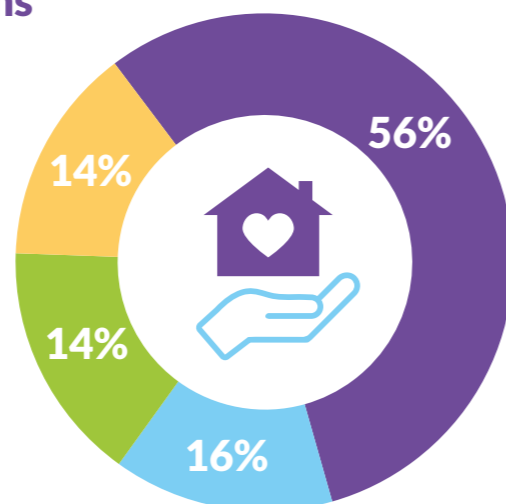
Participant Profile

In total there have been **1,175 referrals** into the programme since commencement (as of 10th March 2022).



Supports Provided under Four Domains

- Housing
- Health
- Technology
- Community



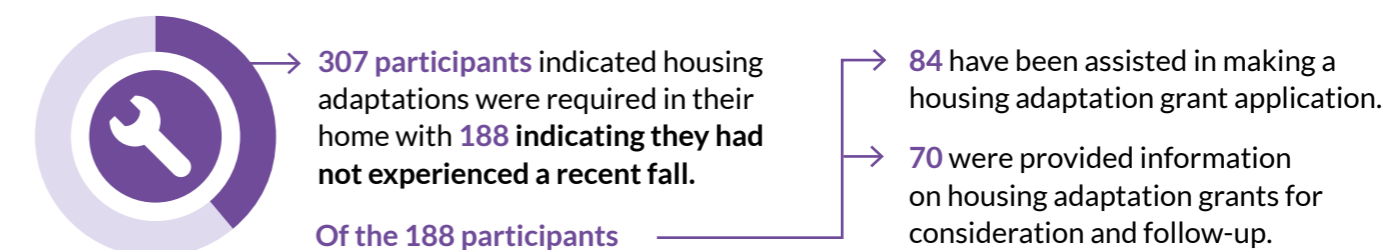
Impacts



Sample data per category is set out below as of March 2022, with a total of 757 participants.

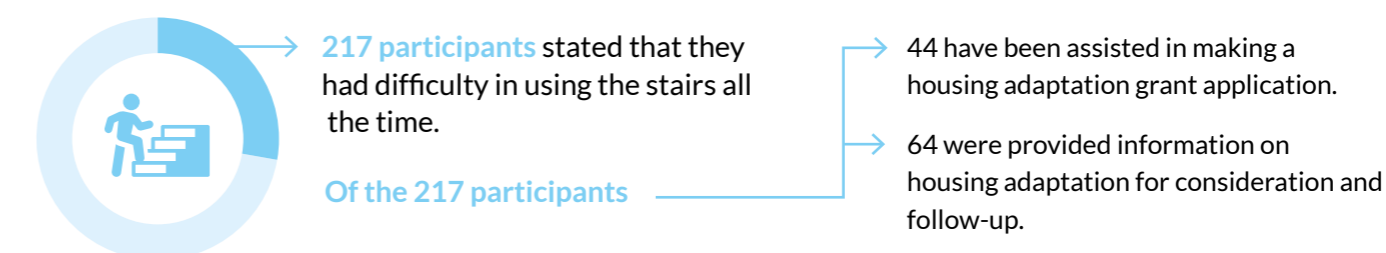
Prevention

Older Person with no falls and an action of Housing Adaptations.



Intervention

Older Person with mobility issues affecting their capacity to use a stairs with an action of stair lift (housing adaptation).



Reaction

Older Person living alone who has experienced a recent fall (within 6 months) or has a history of falls and an action of pendant alarm (entry level telecare with 24 hour emergency response).

