

# EPA Water Quality Report

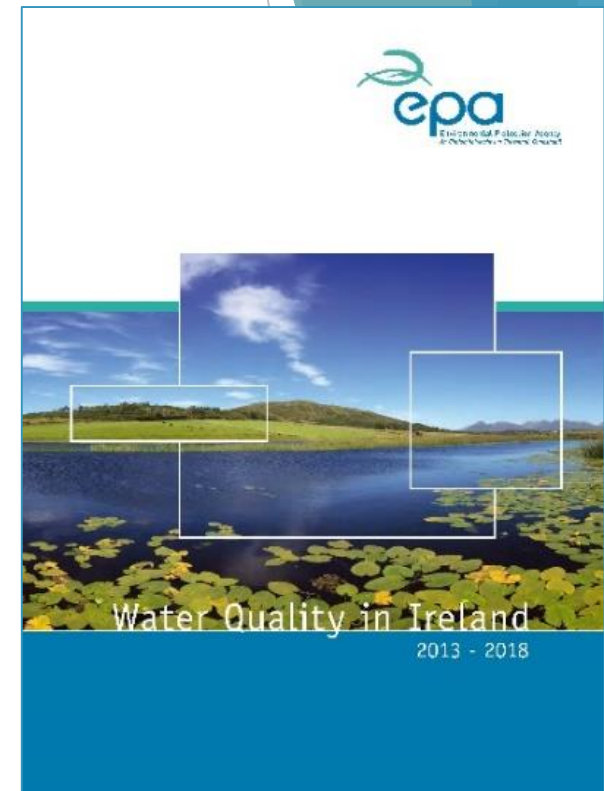
## Water Quality in Galway City

Council Meeting 9<sup>th</sup> November 2020

An analysis of the EPA Report for Galway City:  
Water Quality in Ireland 2015-2018

# Water Quality in Ireland report 2013-2018

- ▶ A short video prepared by the EPA



- ▶ <https://www.youtube.com/watch?v=-y9hqG6tNiw>

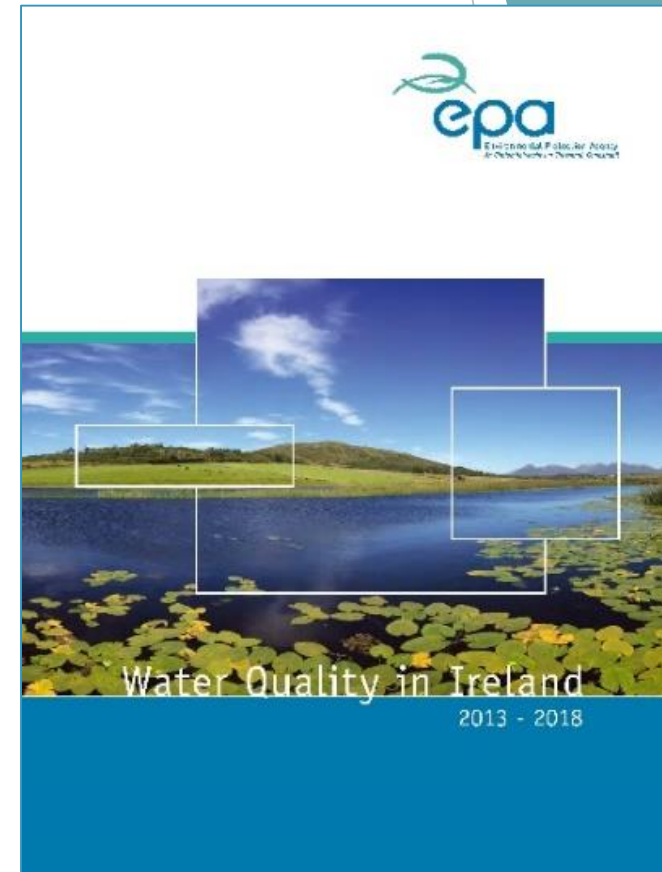
# Water Quality in Ireland report 2013-2018

## National

- ▶ Only 53% of our surface water bodies have satisfactory water quality.
- ▶ Since 2015 there has been a net decline of 5.5% in river water quality

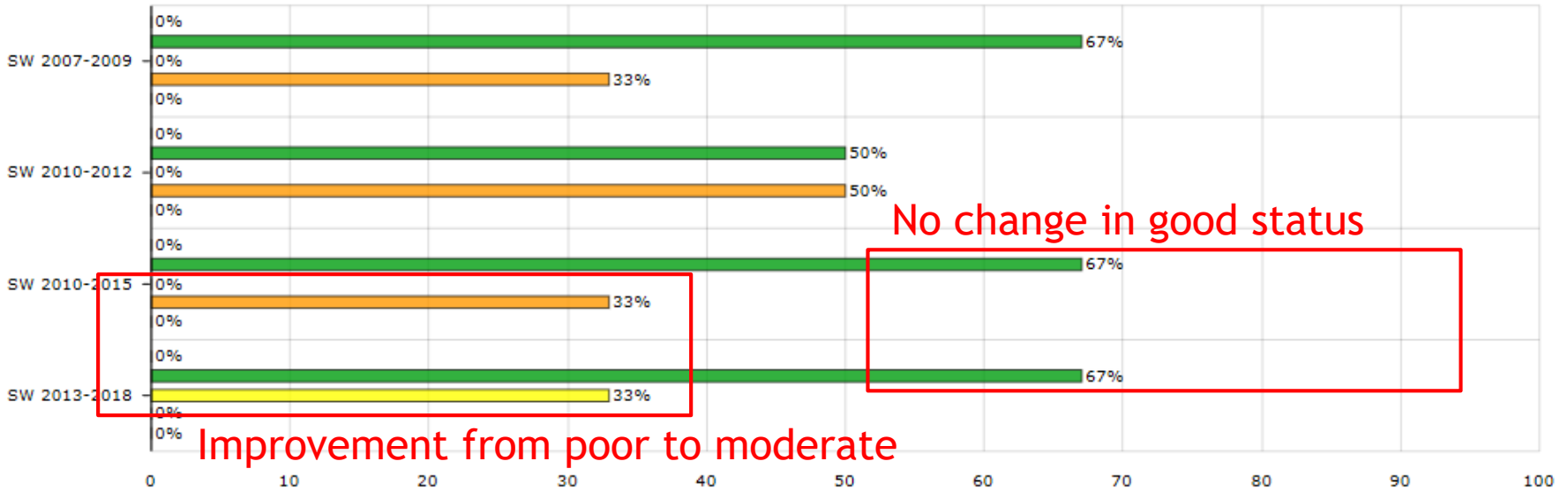
## Galway City

- ▶ 67% of our surface water bodies have satisfactory water quality.
- ▶ 1 River improved from Poor to Moderate status



# Galway (211 wb)

High Good Moderate Poor Bad



Period	High	Good	Moderate	Poor	Bad
SW 2007-2009	0%	67%	0%	33%	0%
SW 2010-2012	0%	50%	0%	50%	0%
SW 2010-2015	0%	67%	0%	33%	0%
SW 2013-2018	0%	67%	33%	0%	0%

# Current water quality status

## Overall Water Quality Status in Galway City

▶ High 0

▶ Good 2

▶ Moderate 1

▶ Poor 0

Pristine



Impacted

Good STATUS WATER BODIES IN = means 'slight' deviation from pristine water:

CORRIB\_020  
Corrib Estuary

# Water Quality Status Map. Catchments.ie

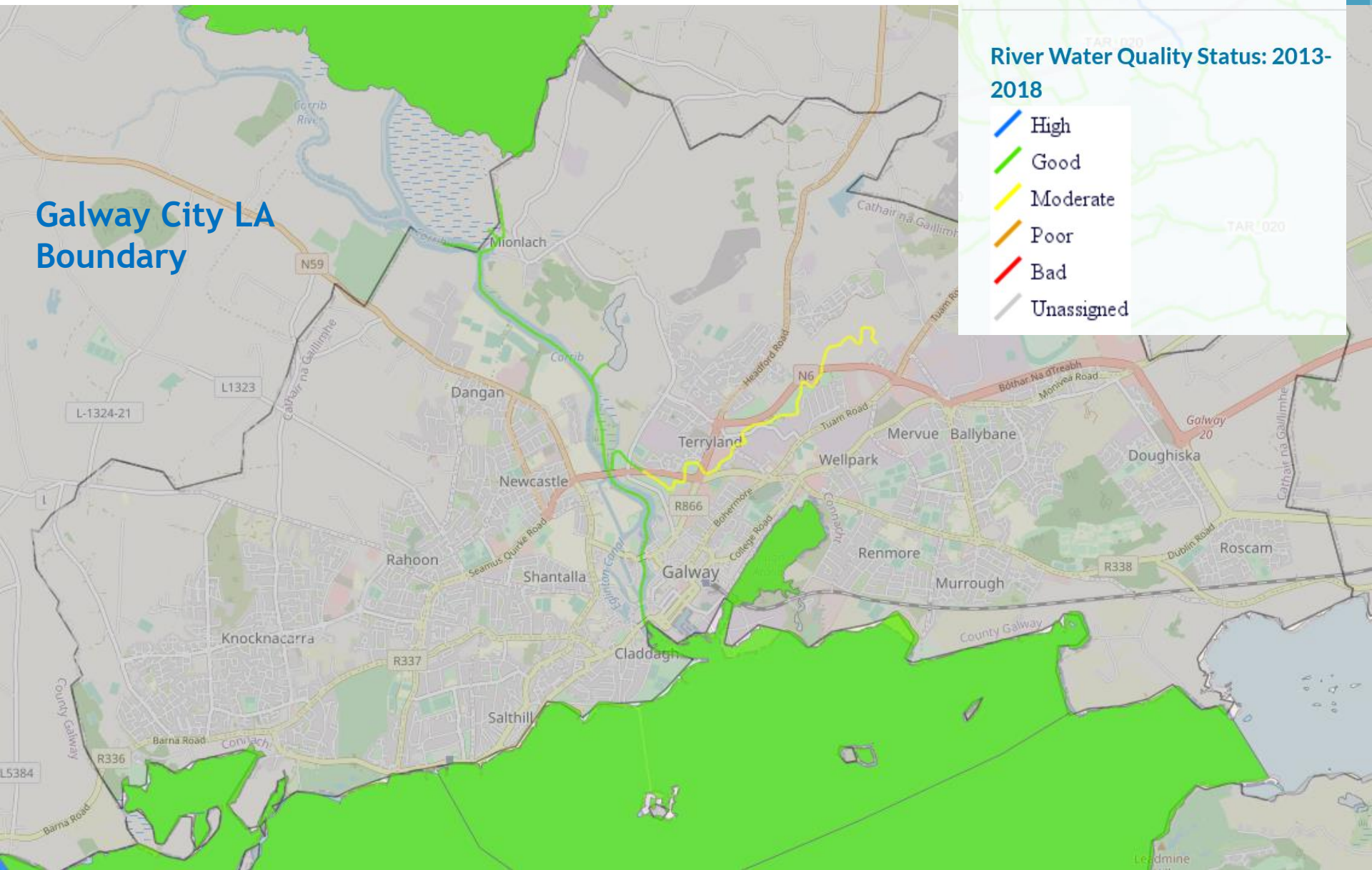
Map legend

THONOGE\_020

Galway City LA  
Boundary

## River Water Quality Status: 2013-2018

- High
- Good
- Moderate
- Poor
- Bad
- Unassigned



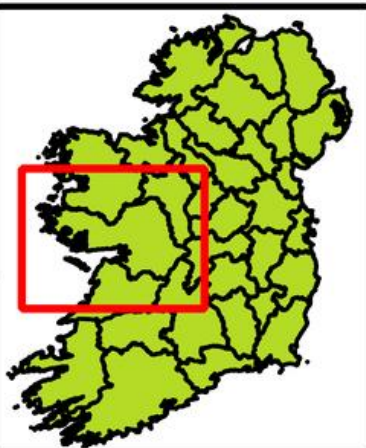
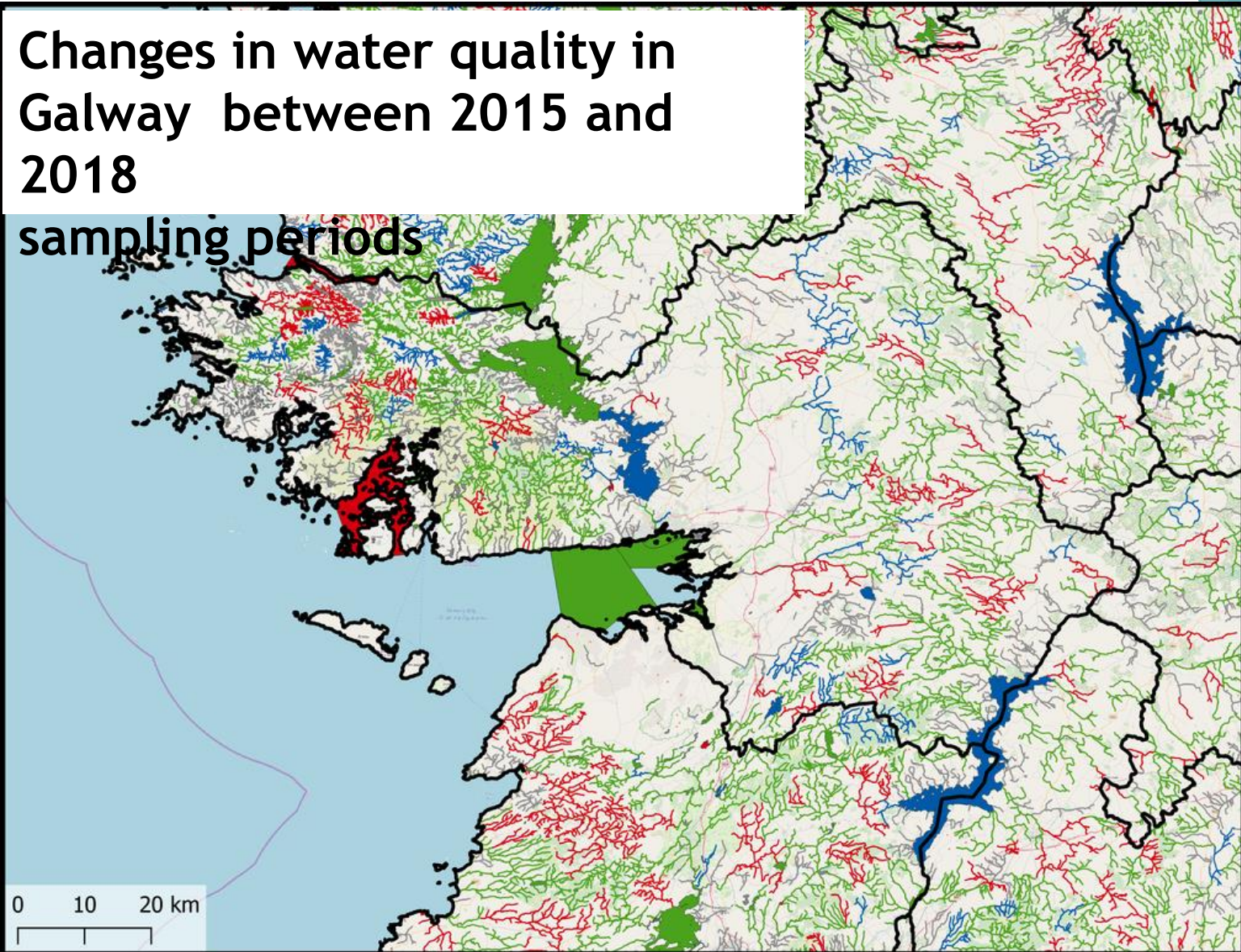


# Changes in water quality in Galway between 2015 and 2018

sampling periods

Status Change  
WFD Status Change Between 2010-15 and 2016-18

- Improved
- No Change
- Deteriorated
- NA



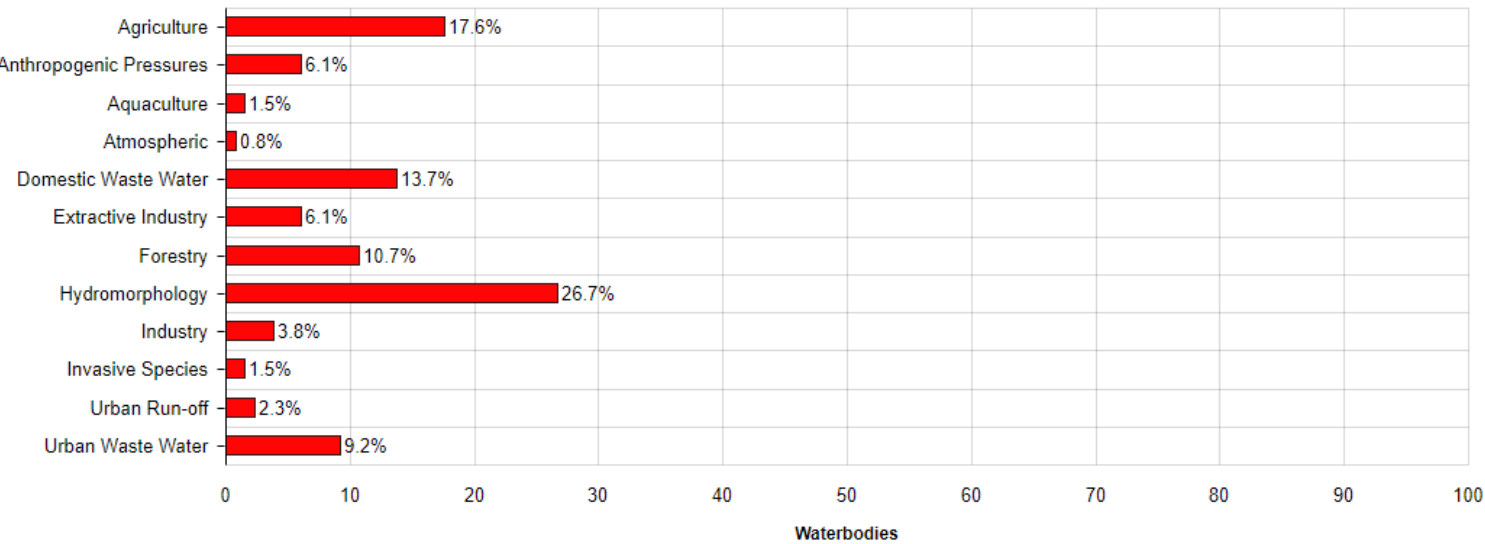
Drawn by: LAWPRO  
Date: 20-03-2020

## Status Change in waterbodies in Galway

Local Authority   
**Waters Programme**  
catchment assessment | healthy waters | vibrant communities

# Pressures

## Significant Pressures Impacting At Risk Waterbodies



We need to understand pressures on our waters in order to protect water quality.



# Galway City Council- Protect & Restore

- ▶ *Protect our Good Status Waterways such as the River Corrib*
- ▶ *Working with LAWPRO and with communities to monitor and improve status of the Terryland River*
- ▶ *Protect Blue Flag beaches and monitor and enhance other Bathing waters*
- ▶ *Identify new areas for protection and monitoring*



## What happens now !

- ▶ *Galway City Council continue to implement its Water Quality work programme for 2020/2021. Inspections will be carried out in known problem areas.*
- ▶ *We need to do some detailed assessment of the activities in areas where we have concerns. We are currently collecting data to help inform this.*
- ▶ *We know that wastewater treatment plants are impacting on water quality in some Counties, but generally this is not an issue for Galway City*
- ▶ *But we know that wastewater treatment plants will require expansion as populations grow in the future*

## What happens now !

- ▶ *There could be other point source problems in areas such as industry and we will have to identify these locations.*
- ▶ *Agriculture has expanded in this period, and we will look at where this maybe impacting on water quality. Agriculture is not a significant issue for Galway City.*
- ▶ Galway City have proposed two new areas for protection to be included in the RBMP and are engaging with the EPA and Lawpro on this.
- ▶ *The public will have a further opportunity for consultation in early 2021 once the draft RBMP is finalised and published.*

# Value of Water Sources in Galway City

Community health & wellbeing via the Canals, River Corrib, Claddagh Basin and Galway Bay

Drinking water supplies

Two Blue Flag beaches and two other bathing areas

Fisheries

Local beauty spots, and amenity areas





- ▶ Information [environment@galwaycity.ie](mailto:environment@galwaycity.ie)
- ▶ Report is at [www.epa.ie](http://www.epa.ie)
- ▶ Data is at [www.catchments.ie](http://www.catchments.ie)

