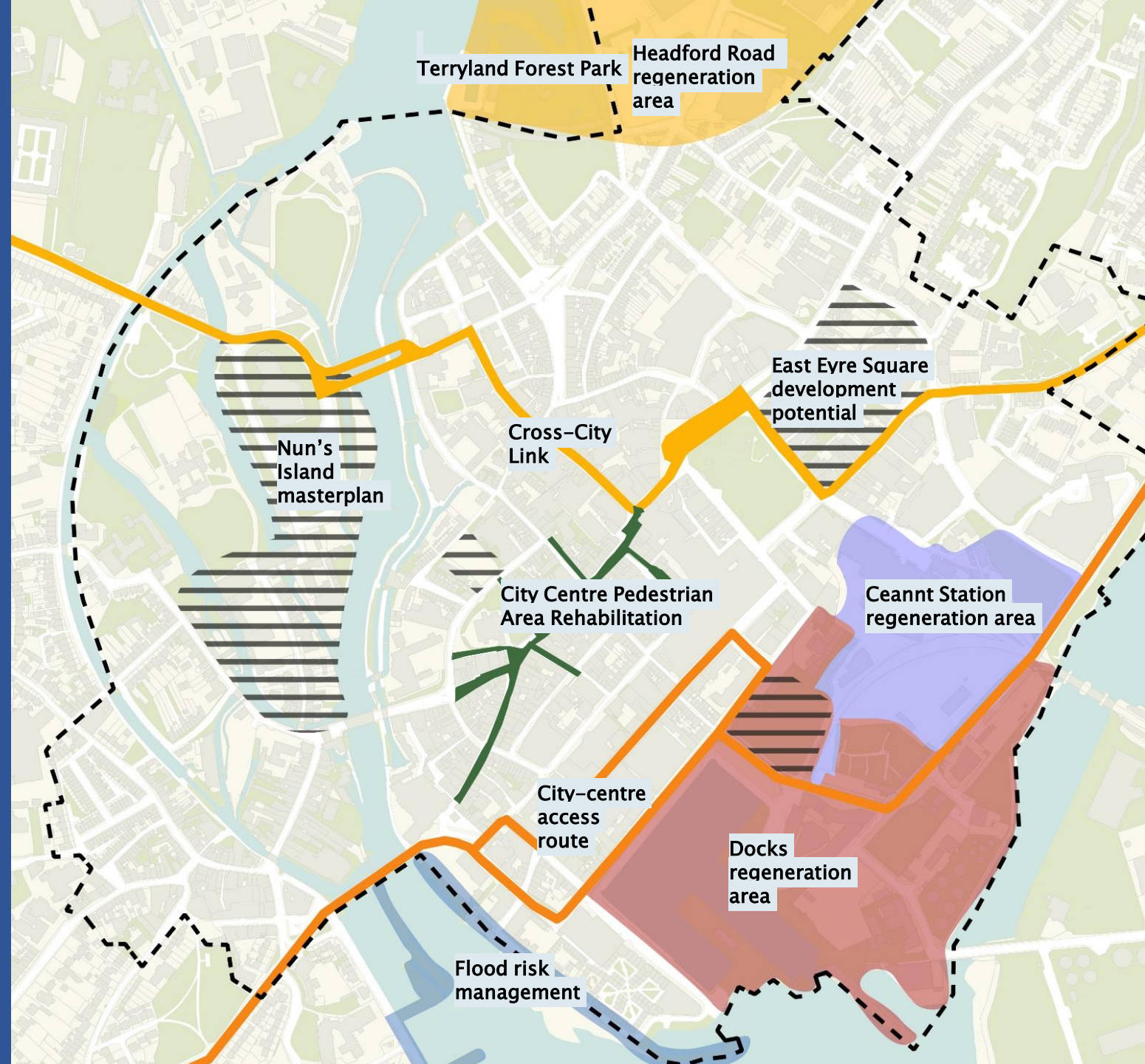
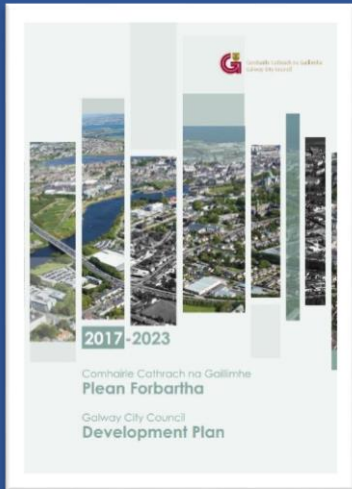




Galway Public Realm Strategy

Straitéis Spásanna Poiblí na Gaillimhe

Building on and supporting existing plans and strategies

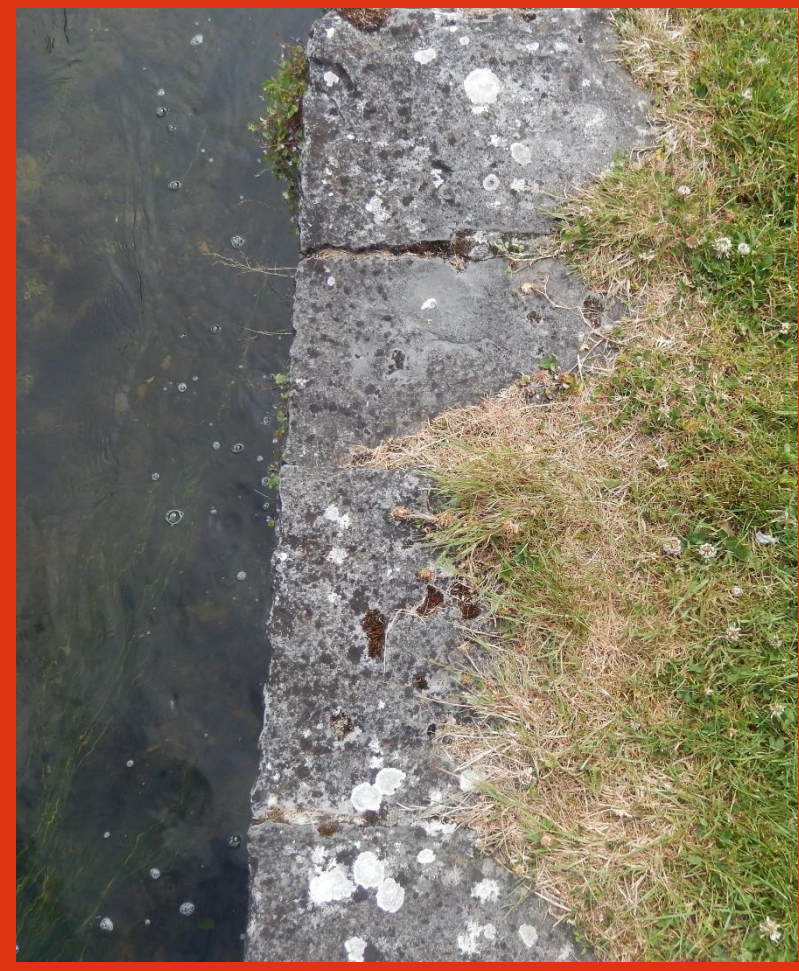
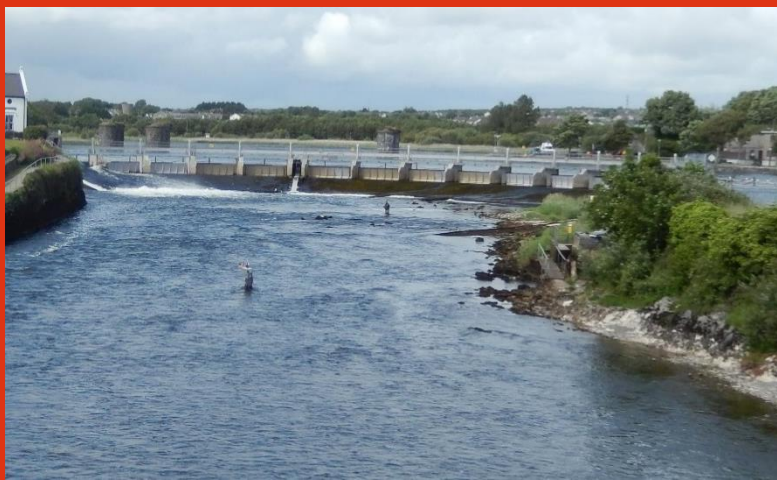


Why invest in public realm?

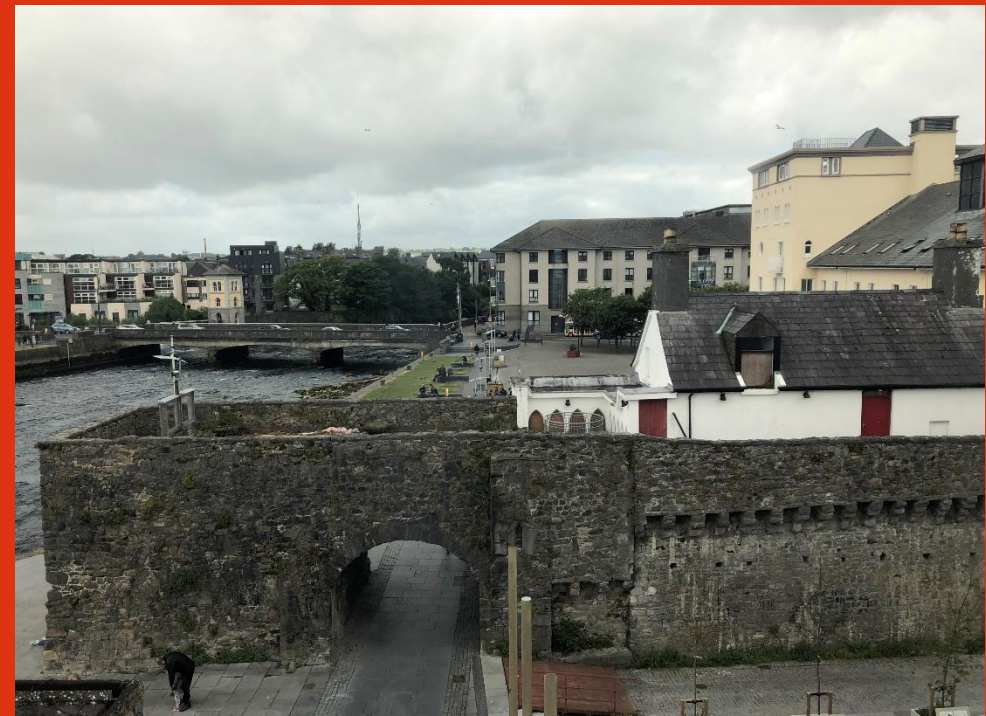
- Supports regeneration and employment (e.g. retail, tourism)
- Improves wellbeing and helps make city more accessible and inclusive
- Can help improve biodiversity, green infrastructure and resilience to climate change
- Can help increase the use of sustainable transport
- Acts as catalyst for others to improve buildings and spaces



Galway is
characterised by
stone and
water....



Galway's built form is an expression of its rich heritage...



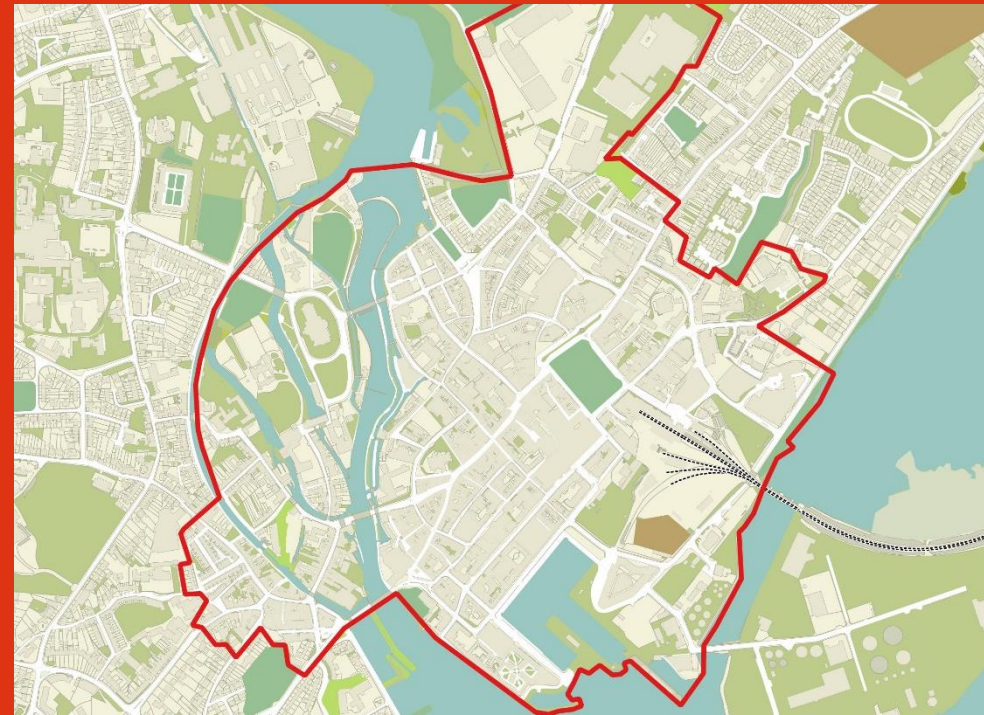
Galway is
bursting with
activity...



Galway city
centre is not
accessible to
all...



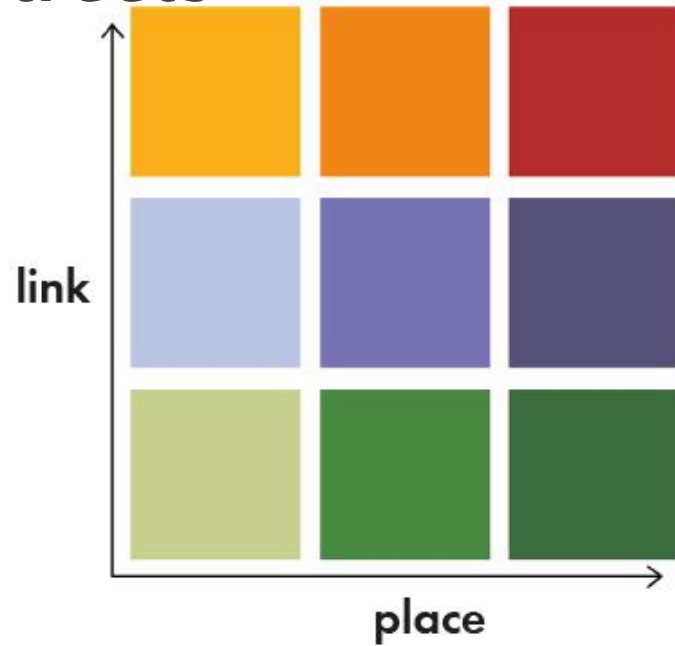
Galway has a rich natural environment, though the centre lacks green space and planting...



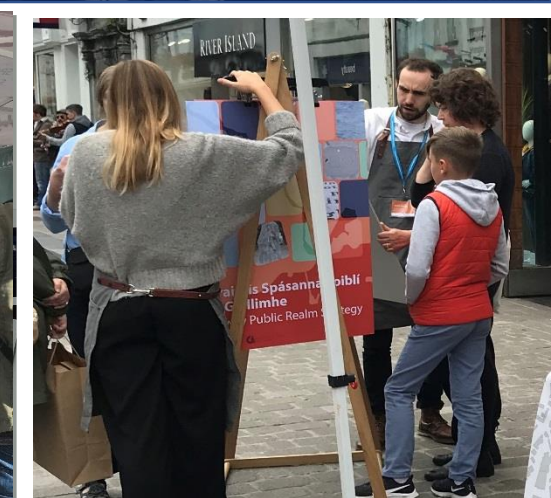
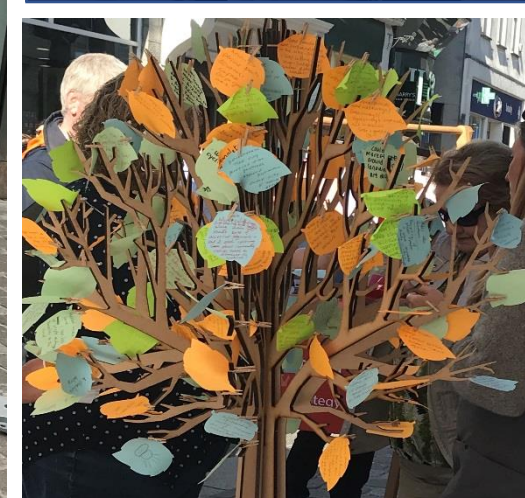
Galway has
significant
opportunity to
improve the
public realm...



Understanding the role, function and performance of streets







Engagement

Street market stall pop up on Shop Street

how use strategy to improve streets and spaces

Galway city centre public realm strategy

Key findings from the baseline analysis, policy and strategies
Summary of consultation
Catalysts for change
Public Realm strategy and framework

Design manual

Public realm typologies
Materials
Lighting
Street Furniture
Trees and planting

Activity manual

Events
Markets
Meanwhile use
Play
Public art

Delivery manual

Priorities
Timescale
Approach
Related initiatives
Funding opportunities
Maintenance



Celebrating Galway's Uniqueness



Greening Galway



Getting around the city



Making Galway inclusive



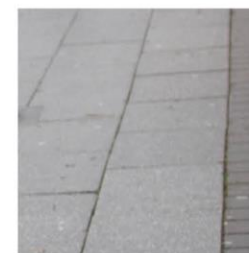
Making space



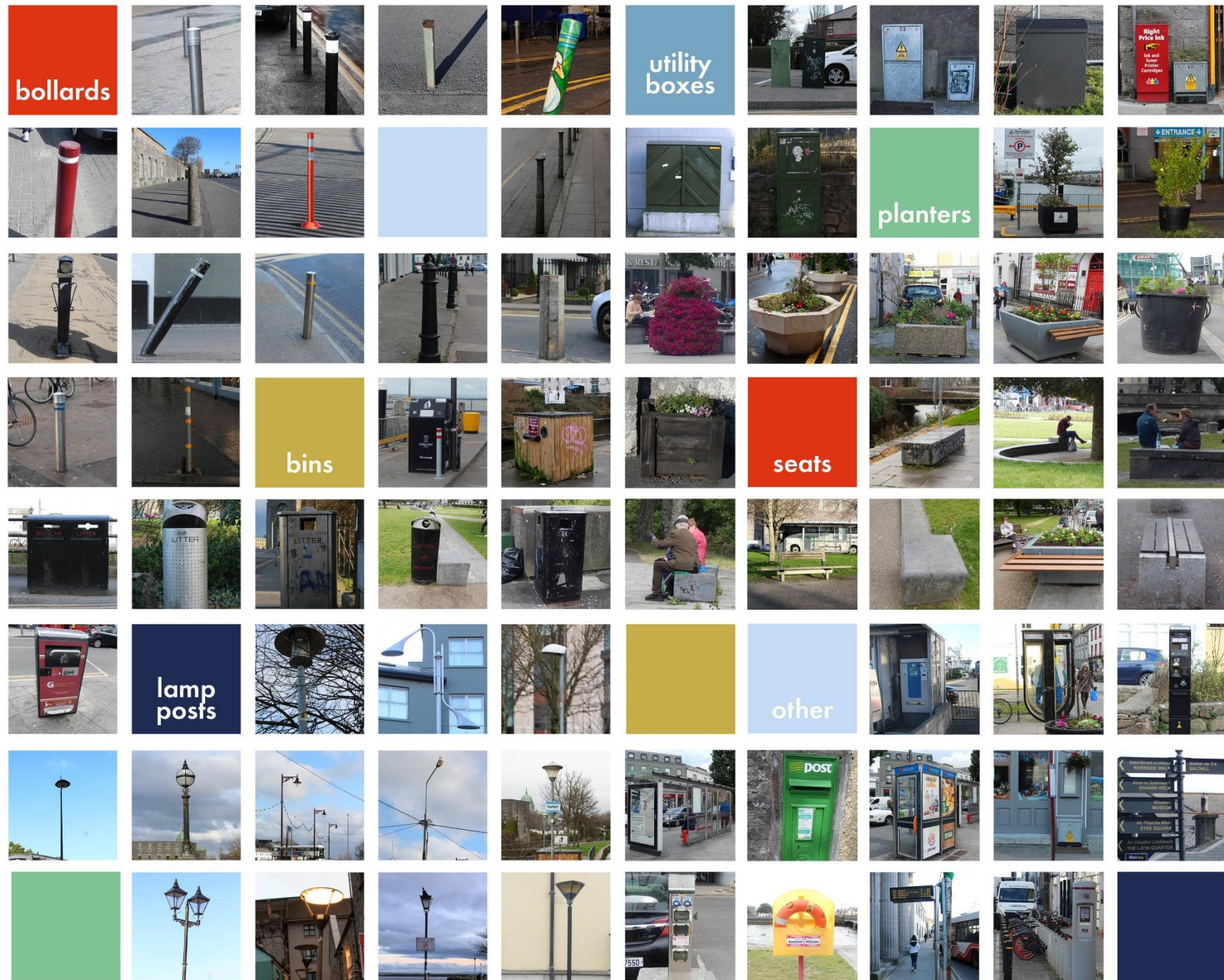


Materials

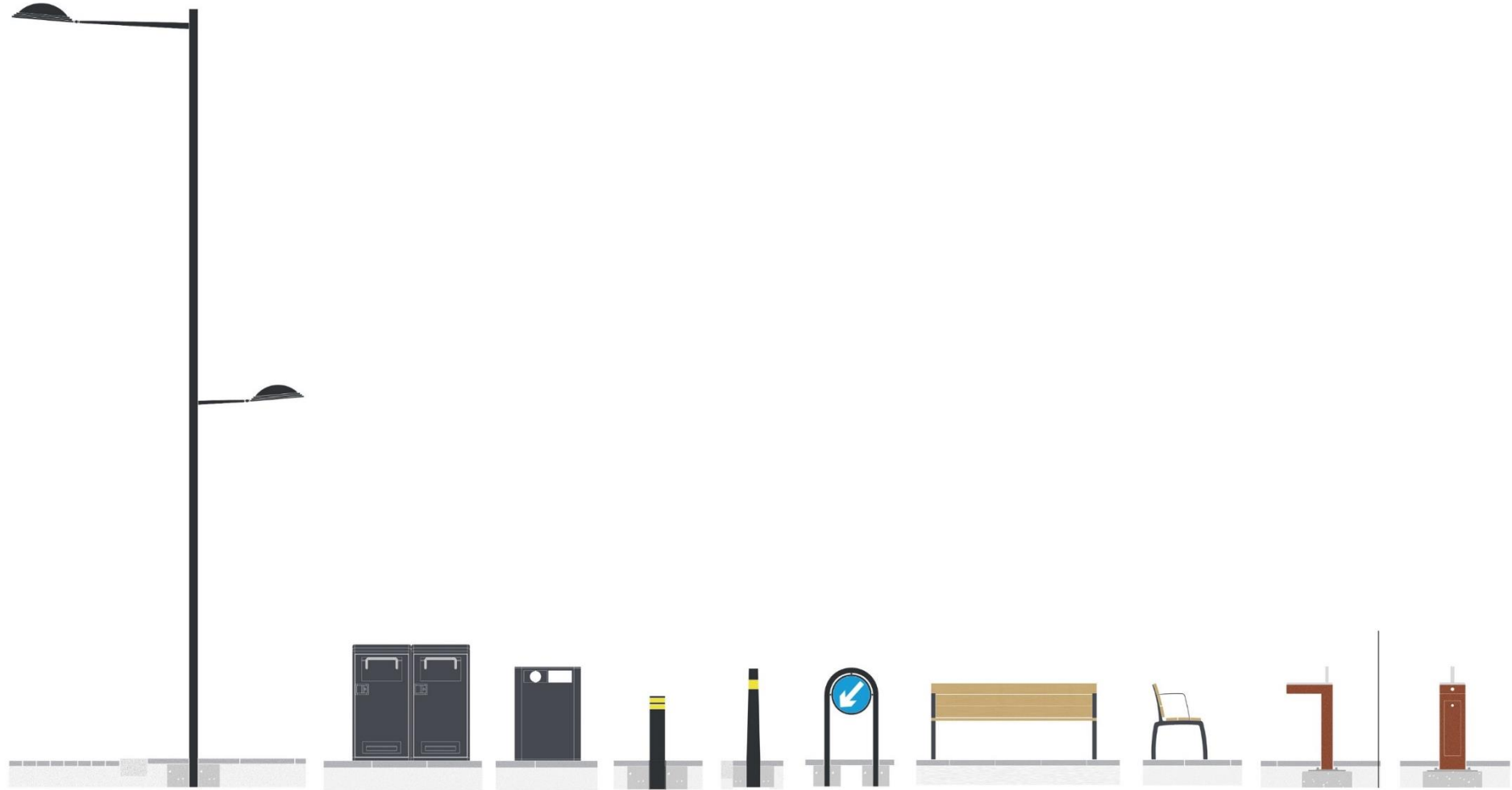
- Keep / use what is good
- Local natural materials
- Simplicity
- Supports de-cluttering
- Practical and flexible
- Maintainable + replaceable



Street furniture



Consistent street furniture palette

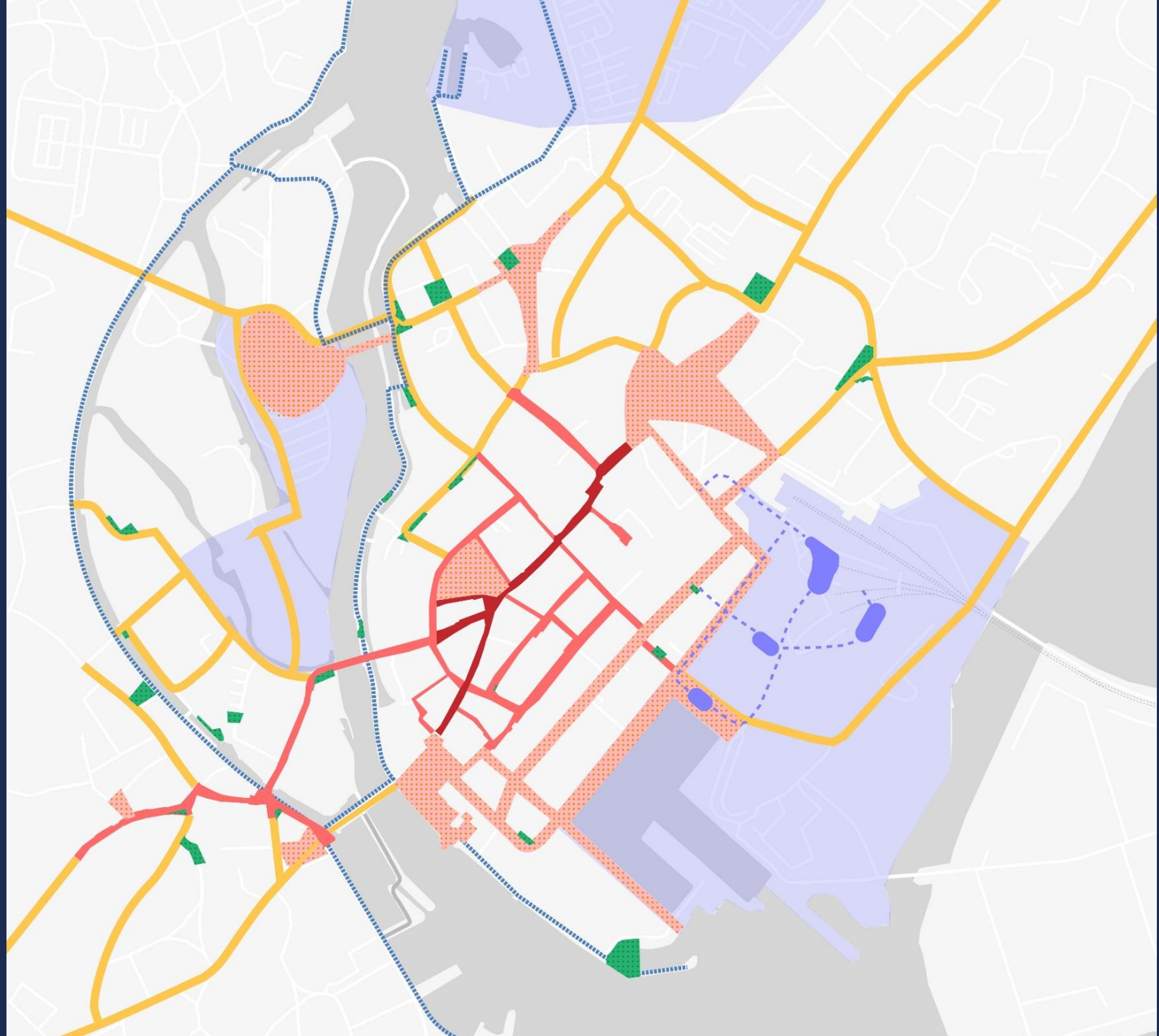


Typologies

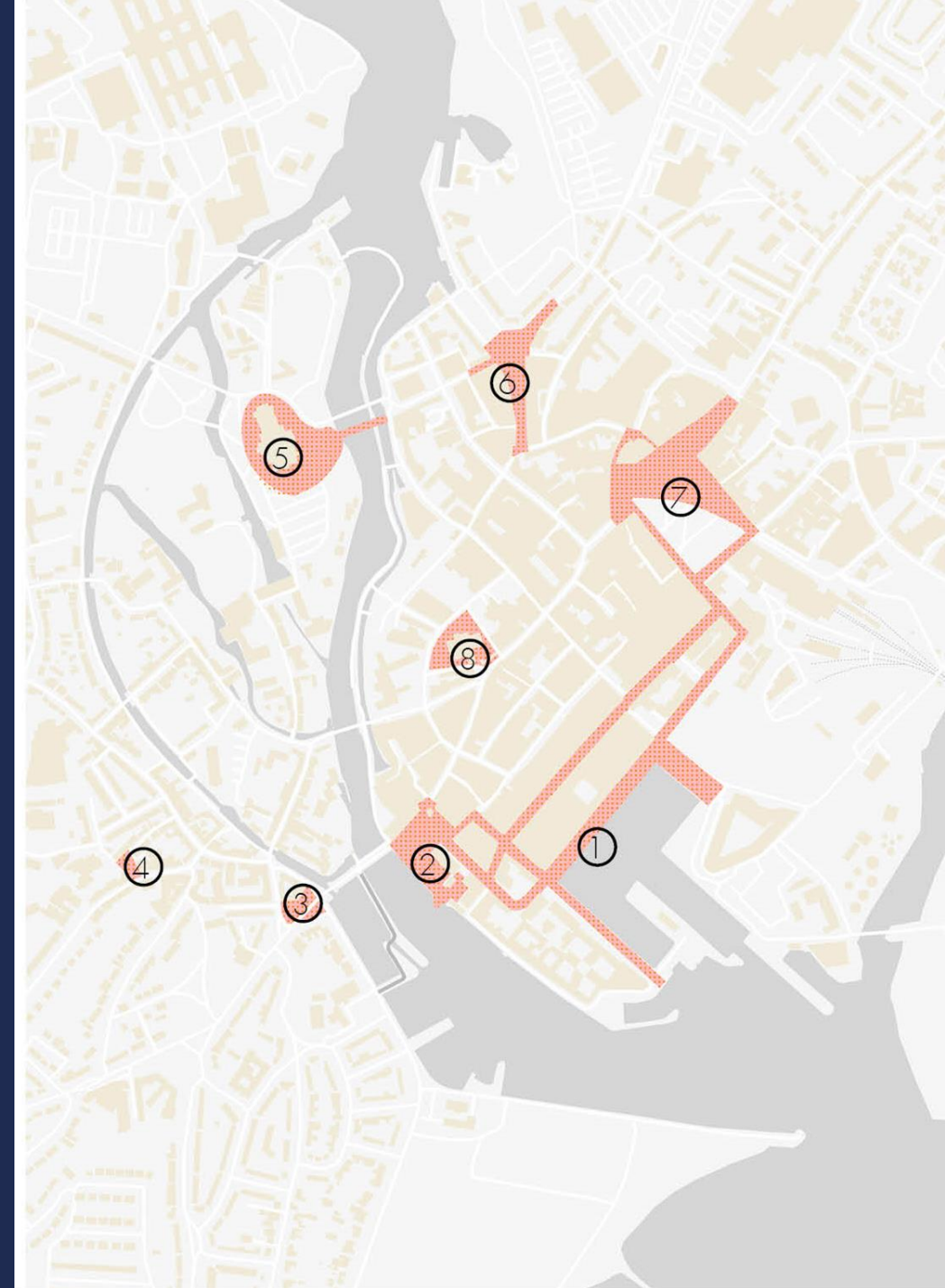
Hierarchy of streets and spaces

Tailored design guidance for each type of space

Focus on lifting the quality of streetscape and consistency



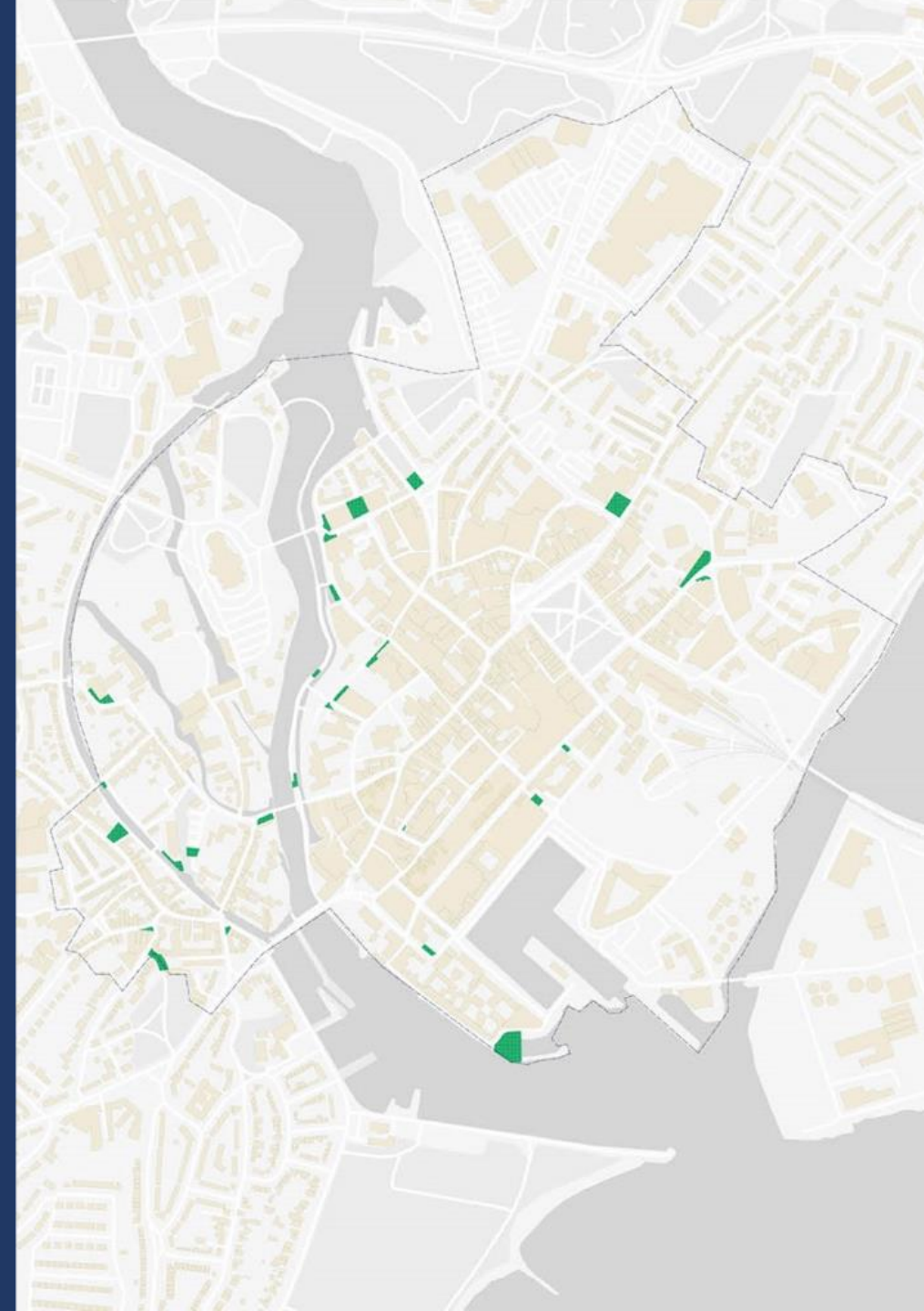
Key public realm spaces



Microspaces

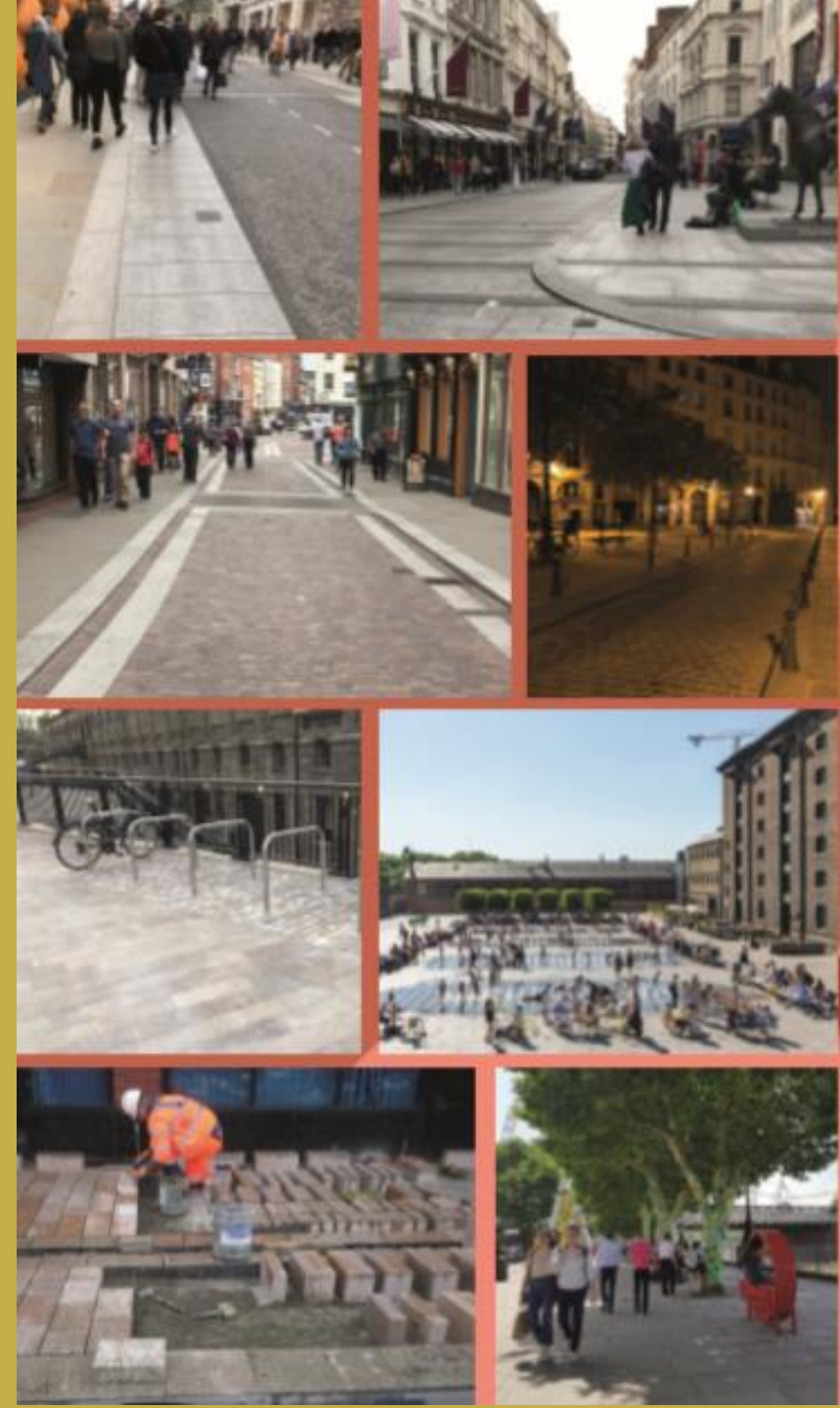
Leftover spaces which could make an important contribution

- A bench
- A tree
- Some planting
- A playable element
- Sustainable drainage



Delivering Quality

- Establish a **consistent palette of materials and street furniture** to make public spaces across the city attractive and coherent
- Use **materials that have longevity**, that are slip resistant and that can be easily cleaned, repaired and sourced, so that they can be replaced like for like
- Integrate street furniture with components that can be **easily cleaned, repaired or replaced**
- Consider **maintenance needs early** in every streetscape design processes
- Strengthen construction expertise to **lay new materials with skill and care**



Delivering Quality

- Ensure designs are bespoke and rooted in a **detailed understanding of the place and the context**
- **Engage with public and key stakeholders** including local residents and businesses in the design development of the projects identified in the Strategy
- Establish a cross-departmental working group to develop and deliver a **proactive maintenance and management strategy**, in liaison with external agencies delivering public realm works
- **Embrace local stewardship** of streets and spaces, enabling local people to be involved



What next?

- Take forward projects which need to be funded, designed and constructed
- Delivery Manual sets out different ways to fund and implement projects
- Engage with community, key stakeholders and designers in design development on a project by project basis

